

Activation and Diagnostics for GPON Networks

Features:

- Auto-registers based on the ONU serial number
- Active device list per OLT (registered & autofind)
- Integrated TR-069 and ACS for compatible CPE
- Supports DHCP and PPOE authentication
- CATV port authorization on selected devices
- Responsive UI supports desktop and mobile devices
- ONU RX measurement with graphs and full ONU optical information
- ONU data traffic measurement

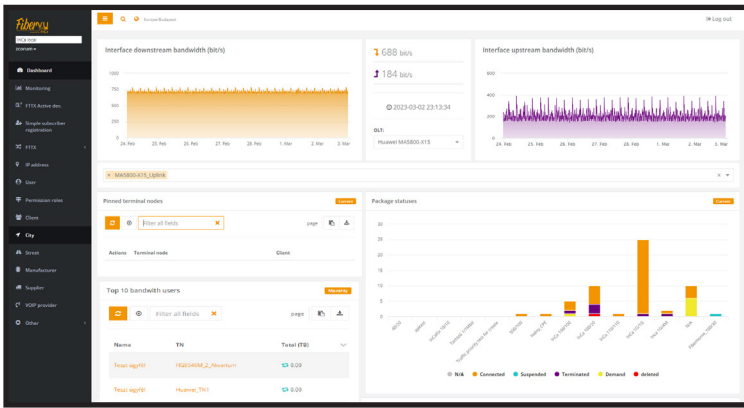
Reduce Costs and Increase Efficiency

GPON management and diagnostics applications are often tied to a specific equipment vendor, limiting your choices and making it difficult to have a single system to manage and troubleshoot your GPON network. You don't need to be tied to one vendor, or stuck managing different devices in multiple applications. We are offering a full-featured GPON OLT activation and diagnostics application that is compatible with multiple fiber vendors. And, with its flexible system architecture, other devices can be integrated as needed.

Significantly increase the efficiency of your activation process. The OLT and ONU management tool includes an integrated TR-069 ACS for compatible CPE that auto-registers based on the ONU serial number, removing the need to preconfigure the ONU slot and port. It also supports DHCP and PPOE authentication and VoIP provisioning.

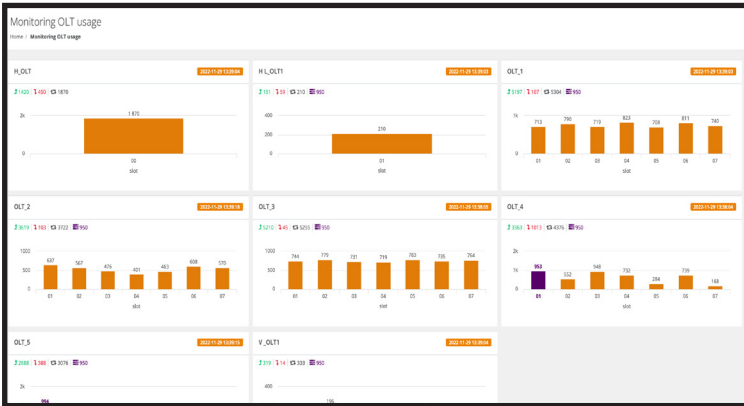
In addition to smoother activation, you will also have the data you need to improve the efficiency of your network management and customer care teams. The application consolidates key data points that you need in order to keep watch on your fiber network and troubleshoot any issues.

A system map overview displays all registered devices, which are color coded by offline and online status. Devices on the map can be filtered to display specific devices by package or device status. In addition, FiberVU provides the ability to see all connected devices on the home WiFi network, and you can change WIFI SSID and the WiFi password remotely for the subscriber.



FiberVU Dashboard

On the FiberVU Dashboard we display Downstream and Upstream Bandwidth Usage for the last seven days, Package Status, and IP Pool Usage. You will also see the Top Ten users for Downstream and Upstream bandwidth for the month, and the Top Ten for Total Bandwidth Usage.



FiberVU OLT Summary

FiberVU's OLT Summary Screen displays all of the OLTs on the network. Charts for each OLT show you the count of ONTs on each line card, and a total count of the ONTs for all cards. You also see a total count of the online and offline ONTs on that card. Click any OLT to drill in for more data.



FiberVU OLT Details

From the Summary Screen you can drill in to view the OLT Details Screen, where you will see the number of online and offline devices on each port. A pie chart shows the breakdown of devices on the OLT by package. You can click to download the detailed package information.

FiberVU supports the following vendors and equipment:

- BDCOM GP3600 series
- Calix E7
- DASAN V82xx, V58xx, V81xx and V1 series
- DZS V-series
- Eltex MA4000 and LTP series
- FiberHome AN5516-XX series
- Huawei EA/MA5600 and 5800 series
- KingType GPON and EPON OLT-s
- Nokia FX and DF series
- VSOL 1600D
- ZTE ZXA-10 C300 and C600 series

Contact Us

ZCorum
 4501 North Point Parkway, Suite 125
 Alpharetta, GA 30022
 1-800-909-9441
 info@ZCorum.com

- ZCorum.com
- Facebook.ZCorum.com
- Twitter.com/ZCorum