

Proactive Network Maintenance is Now Easy and Affordable

PreEqualization Analyzer is a web-based, DOCSIS Proactive Network Maintenance (PNM) tool that will change the way you approach plant maintenance, resulting in an increase in operational efficiency, reduced costs and a better subscriber experience.

Find and fix upstream impairments before they impact subscribers

PreEqualization Analyzer collects and analyzes the pre-equalization data from your CMTS and cable modems and automatically identifies which modems are affected by upstream impairments like micro-reflections and group delay.

Distance-to-fault estimates help you determine with high accuracy where those impairments are, so you can see which issues are in the home or at the drop versus those that are further out in the plant. The application also identifies modems likely impacted by a common impairment, and plots them on the map so you can find the source of the problem. The information in PreEqualization Analyzer lets you intelligently address upstream issues as part of your normal maintenance routine, before they get worse, and before they start affecting service for your subscribers.

Proactively Address Downstream Spectrum Issues

PreEqualization Analyzer also includes our SpectraVizion module that automatically identifies downstream spectrum issues like Suckouts, Roll-off, Tilt, Standing Waves, Adjacency and FM Noise. You will see a list of affected devices and the spectrum issue. Plus, one click displays the spectrum captured that day or from previous days. You can also rescan the device at any time to capture the current spectrum. No more waiting for your customers to call, followed by a blind search in the field for the problem.

Save money, save time and improve the customer experience

With PreEqualization Analyzer you can send the right technician to the right place before an issue causes a problem for one or more of your subscribers, increasing the efficiency of your staff and shortening mean-time-to-repair. And let's not forget the benefits for you and your subscribers as you reduce the number of unplanned outages. Compare that to repeatedly rolling trucks in a reactive, trial and error search every time a customer calls in with a complaint.

- **Business Intelligence Dashboard displays worst modems and nodes**
- **Pinpoint the location of impairments in the outside plant and the drop**
- **Locate in-home issues like loose connectors, reverse splitters, bad wiring**
- **View modems and degree of impairments on a map or in a table**
- **Identify groups of modems affected by a common upstream issue**
- **Automatically identify devices with downstream spectrum issues**
- **Assign work orders to technicians direct to their PNM Mobile App**

PreEqualization Analyzer

A PNM TOOL



Automatically identifies upstream and downstream impairments in your cable plant.

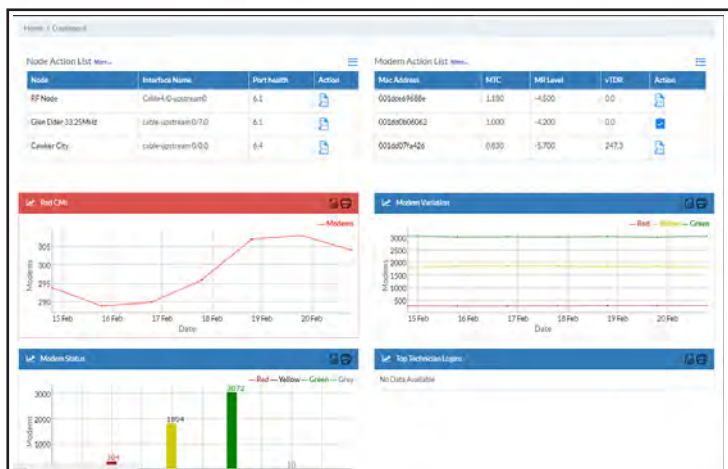


ZCorum™

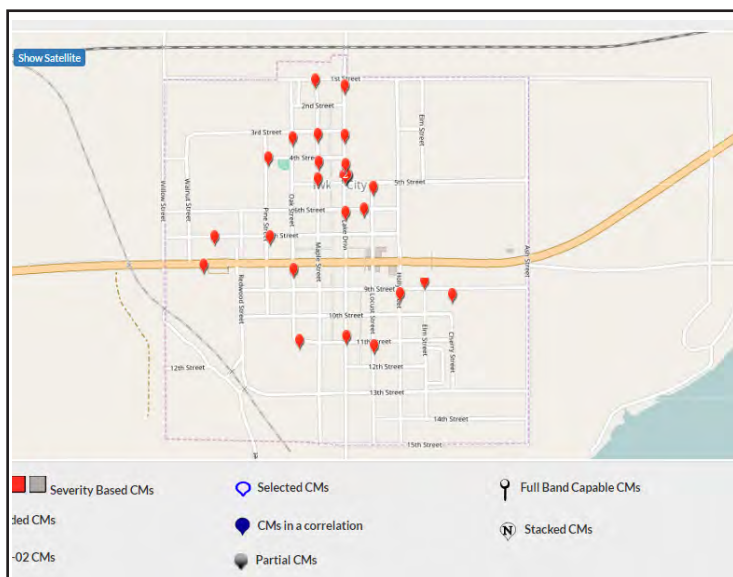
1.800.909.9441
4501 North Point Parkway, Suite 125
Alpharetta, GA 30022
ZCorum.com
Facebook.ZCorum.com
Twitter.com/ZCorum



ZCorum™

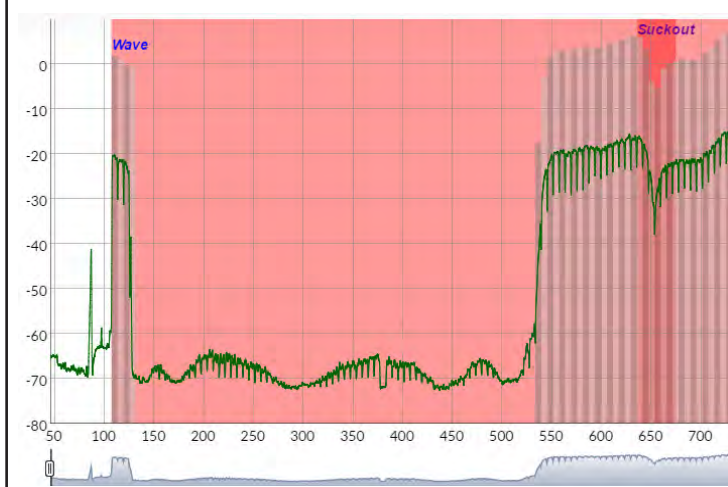


Business Intelligence Dashboard. Clearly see which modems and nodes should be addressed first.



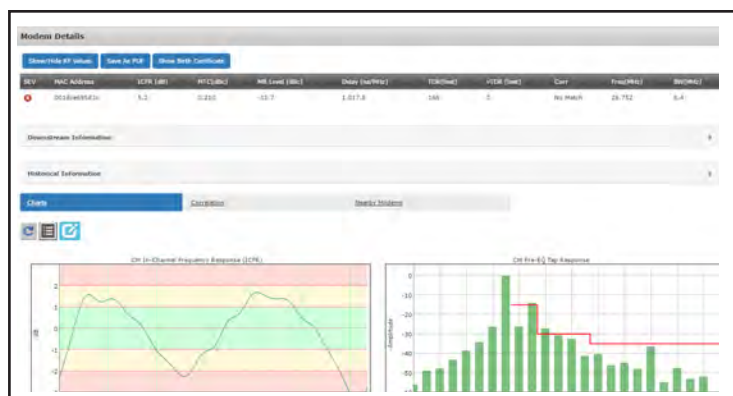
Intelligent Mapping. See the location of any individual modems experiencing a problem, or groups of modems impacted by a common upstream impairment.

Mac Address	Impairment Severity	Impairments	View	Timestamp	Upstream
203666d2403	Wave	Wave		2017-05-02 01:50:37	Logical Upstream Channel 9/2.0/0
203666d274f	Wave	Wave		2017-05-02 01:50:37	Logical Upstream Channel 30/8.0/0
203666d279f	Wave, Tin	Wave, Tin		2017-05-02 01:50:37	Logical Upstream Channel 9/13.0/0
203666d284b	Wave	Wave		2017-05-02 01:50:37	Logical Upstream Channel 30/4.0/0
203666d302f	Wave	Wave		2017-05-02 01:50:37	Logical Upstream Channel 9/8.0/0
203666d3083	Suckout, Wave	Suckout, Wave		2017-05-02 01:50:37	Logical Upstream Channel 9/8.0/0
203666d3179	Wave	Wave		2017-05-02 01:50:37	Logical Upstream Channel 9/12.0/0
203666d347f	Wave	Wave		2017-05-02 01:50:38	Logical Upstream Channel 9/14.0/0
203666d3483	Wave	Wave		2017-05-02 01:50:59	Logical Upstream Channel 9/11.0/0
203666d3509	Suckout, Resonant peak	Suckout, Resonant peak		2017-05-02 01:50:59	Logical Upstream Channel 11/2.0/0



Spectrum Capture. See a list of devices experiencing downstream spectrum issues and view a capture of the full spectrum for any device (data and video).*

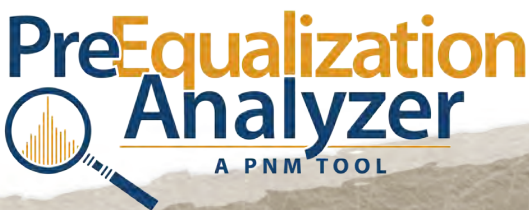
*Device must support spectrum capture



Device Details. Drill in to see the pre-eq data and RF statistics for all upstreams on any device.

Birth Certificate Information					
Mac Address :	001DC6695C80	Print	Equipment		
Status :	Pass		Equipment		
Installed By :	Brady		MAC Address		
Installation Date :	2016-06-10 02:51:55		00:1D:CE:69:5C:80		
Modem Status :	Online				
Upstream Information					
Label	26.752 MHz	Unit			
US MER	37.0	dB			
CM Tx Pwr	41.5	dBmV			
MR Level	-30.9	dBc			
Delay	160.0	ns/MHz			
ICFR	0.5	dB			
Downstream Information					
Sr No	Reserved Channel	Severity	Installed By	Status	Installation Date
1	No	Pass	Brady	Pass	2016-06-10 02:51:55
2	No	Fail	Doyle	Fail	2016-05-15 14:29:49

Birth Certificates. See and track the modem's pre-eq and RF data at the time of install to improve installation success and training.



A PNM TOOL